

PRO-Clean™

Rapid Protein Residue Test
Part Number: ATP-120 (100 Tests)

Description/Intended Use

PRO-Clean is a ready to use rapid protein residue detection system for testing any surface after the cleaning process. PRO-Clean will turn from green to purple if protein is present in the sample. The more protein collected in the sample, the quicker and darker the color change. There is no need to continue timing if the surface is dirty and the color changes to purple before 10 minutes at room temperature. This test is dependent on time and temperature; therefore, it is important to let the devices reach ambient temperature (15-25°C) before testing.

PRO-Clean is intended to provide rapid validation of hygiene levels of a surface and show due diligence in a HACCP program. It is not intended to be a microbiological monitoring tool; however, it does detect bacteria. (For level of bacterial contamination, contact Scigiene or visit www.scigiene.com. Common sterilizers at normal concentrations do not cause interference or false positives. High concentrations of alkaline sanitizers may cause false negative results in some cases. Peroxide based disinfectants can cause a false-positive color change reaction. It is best practice to wait for the appropriate time after sanitizing before testing the surface. It is important in any sampling program to establish a consistent and easy-to-replicate sampling procedure.

Sanitation is usually a two-step process involving a detergent cleaning and subsequent (optional) disinfection step. To ensure the best results, collect the sample after detergent and rinsing steps, but prior to any terminal disinfection. Product residues left on a surface after detergent cleaning reduces the effectiveness of the disinfection. This is why testing prior to disinfection prevents wasted chemicals and time and ensures optimum test performance in a food safety program. If testing prior to disinfection/sanitization is not possible, make sure proper dwell time is observed before using PRO-Clean. PRO-Clean will also detect other reducing substances such as simple sugars, tannin and ascorbic acid.

Direction for Use

1. When collecting a sample, make sure to use aseptic techniques. Do not touch the swab or the inside of the sampling device with fingers. Holding the swab tube, twist and pull the top of the swab out of the swab tube. The swab tip comes pre-moistened with sterile Pyrogen-free water. Condensation may be visible on the inside of the swab tube, this is normal. Thoroughly swab a standard 10 x 10 cm (4 x 4 inch) area for a typical flat surface. For irregular surfaces, ensure the swabbing technique remains consistent for each swab and sample a large enough area to collect a good sample.

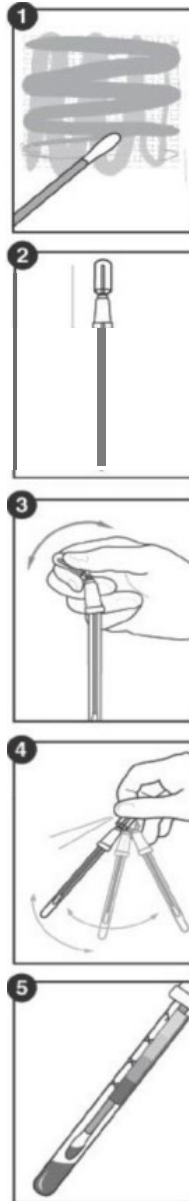
Tip: The test is designed to detect invisible or trace amounts of product residue. When performing sample collections, it is important to not overload the swab bud with too much of the sample. Some products in very high concentration can inhibit the reaction.

2. After swabbing the desired test area, place swab back in swab tube.
3. To activate device, hold swab tube firmly and use the thumb and forefinger to break the Snap Valve by bending the bulb forward and backward. Squeeze the bulb twice, expelling all liquid down the swab shaft.
4. Bathe the swab bud in liquid by gently shaking for 5-10 seconds.
5. Wait 10 minutes for color change from green to purple at room temperature. Most color changes take place in less than 60 seconds. After 10 minutes, compare color of reagent against PRO-Clean color chart on tube label and record result.

Interpretation of Results

The color of the solution and the time in which the color change takes place will indicate the level of protein residue on surface. By comparing the color of the solution against the PRO-Clean tube label, an estimate of surface cleanliness can be made.

Green=Pass result. Clean, no further action required.
Grey=Caution. Small amount of residue present; Re-test, re-rinse or re-clean, depending on protocol procedures.
Purple=Fail result. Re-clean and re-test.



Sensitivity

- At room temperature (20-23°C):
 - 80 µg after 1 minute
 - 50 µg after 5 minutes
 - 20 µg after 10 minutes

Storage and Shelf Life

18 months at room or refrigerated temperatures (2-25°C). Refer to expiration date on label.

Sanitizer Information

Common sanitizers at normal concentrations do not cause interference or false-positives. High concentrations of alkaline sanitizers may cause false-negative results in some cases. Peroxide based disinfectants can cause a false-positive color change reaction. It is best practice to wait for the appropriate time after sanitizing before testing the surface.

Safety Information

The components of PRO-Clean do not pose any risk to health when used in accordance with standard laboratory practices and procedures in this insert.

For further safety instruction, refer to PRO-Clean Material Safety Data Sheet (MSDS).

Contact Information:



1295 Morningside Avenue, Unit 16-18
Scarborough, ON M1B 4Z4 Canada
Phone: 416-261-4865 Fax: 416-261-7879
www.scigiene.com