

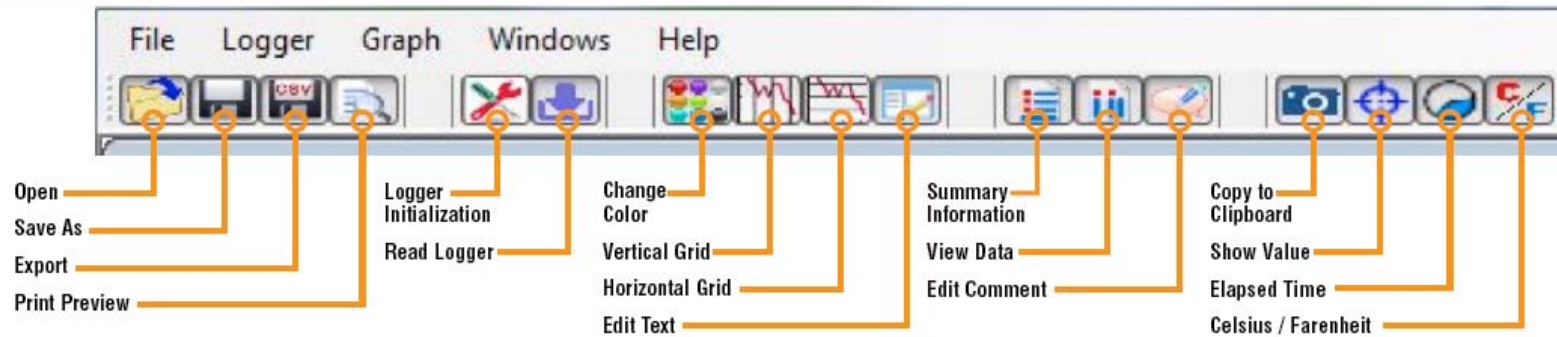
# MARATHON PRODUCTS, INC.

## Maxi-Thermal Software

Works with c\temp-USB, edl-USB, 2c\temp-USB, and 2c\temp-RH-USB.



### Understanding the Menu Bar



Q U I C K S T A R T Q U I D E

## Logger Initialization

1. Select Logger in menu bar
2. If there was a previous recording click **Erase All Data**
3. Enter **Description** for the recording
4. Select **Time Zone**
5. Select **Start Delay**
6. Select **Duration of Recording**
7. Select Units – Fahrenheit or Celsius
8. Select **No Alarm**, OR
9. Set **Maximum** (High Alarm) Temperature
10. Set **Minimum** (Low Alarm) Temperature
11. Click **Write to Device**

Logger Initialization

**Description of Recording**

Model number CTempUSB(Type E)

Description Maxitrak

(Max. 20 characters and can't have <??:\/\*)

**Current Clock**

(GMT-08:00) Pacific Time (US & Canada)

3/6/2012 14:00:09

**Logger Clock**

(GMT-08:00) Pacific Time (US & Canada)

3/6/2012 14:00:09

**Recording**

Start Delay 5 0 Min.

Duration 6 60 Days

(Sample Interval: 10 Min 38 Sec)

**Unit**

F  C

No alarm

**Alarm**

Maximum 30 °C

Minimum 20 °C

Quarantine 0

Event Log:

14:00:03 Found: c:\temp\_usb on 682b4456d9&0#{53}

Write to device

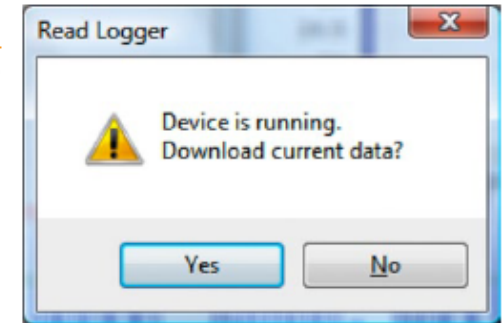
Erase All Data

Extra settings...

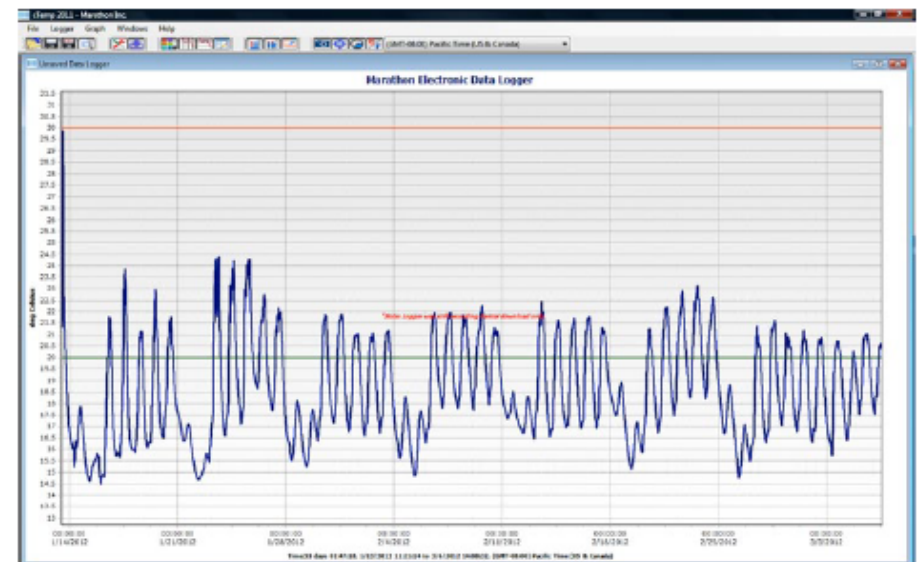
SCREENSHOT 2 – Logger Initialization

## Read Logger

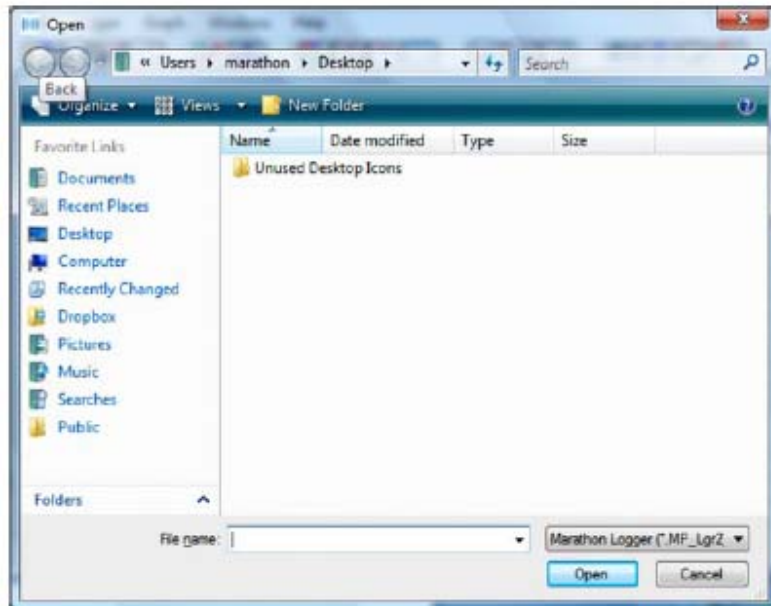
1. Select Read Logger on menu bar  
If the logger is recording you will see SCREENSHOT 3.
2. Select **Yes** or **No**
3. If you select Yes MaxiThermal will read the logger and display the graphical data (SCREENSHOT 4).



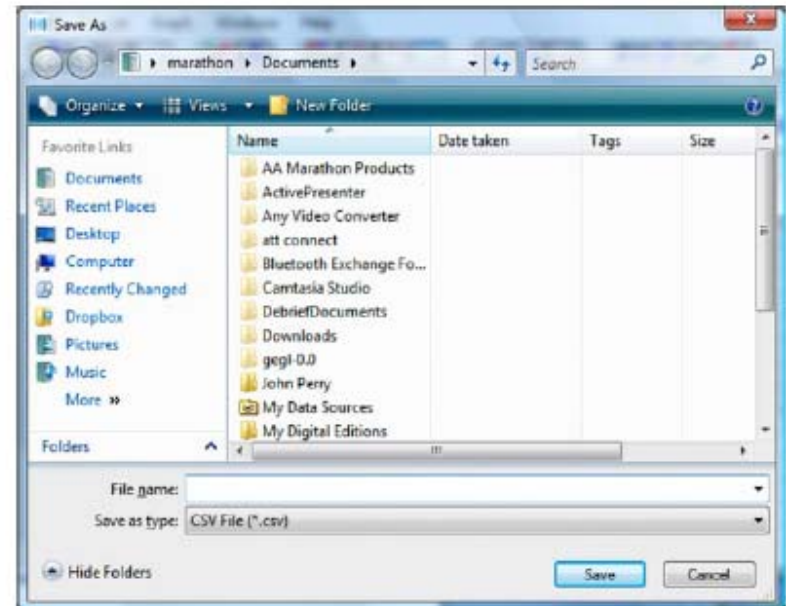
SCREENSHOT 3 – Read Logger



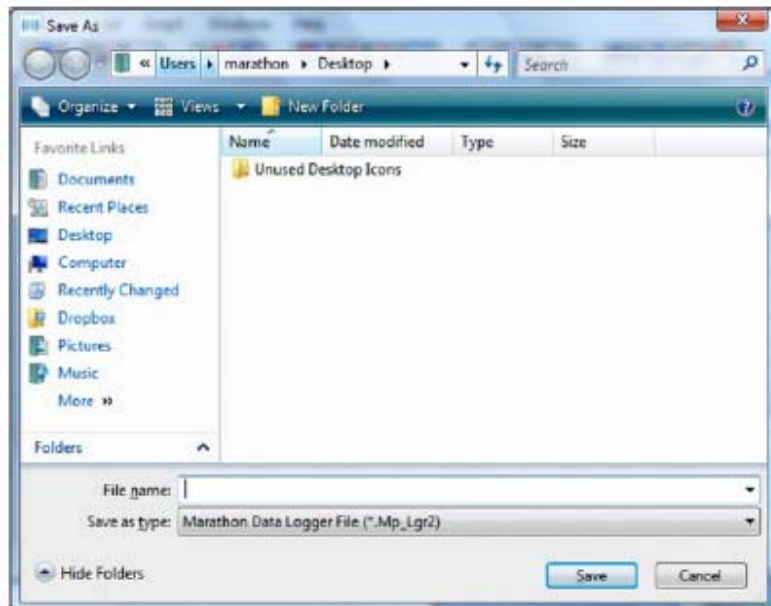
SCREENSHOT 4 – Graphical Data



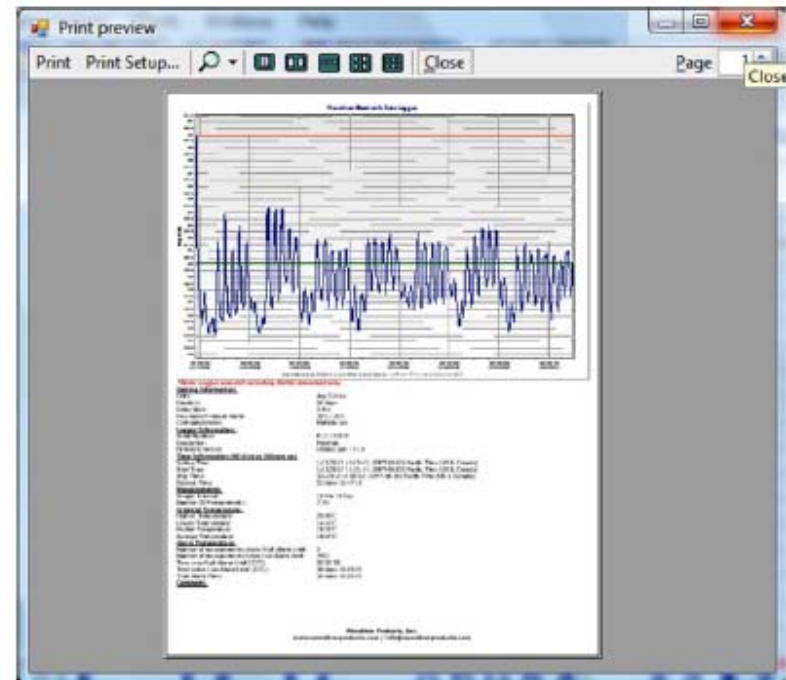
SCREENSHOT 6 – Open



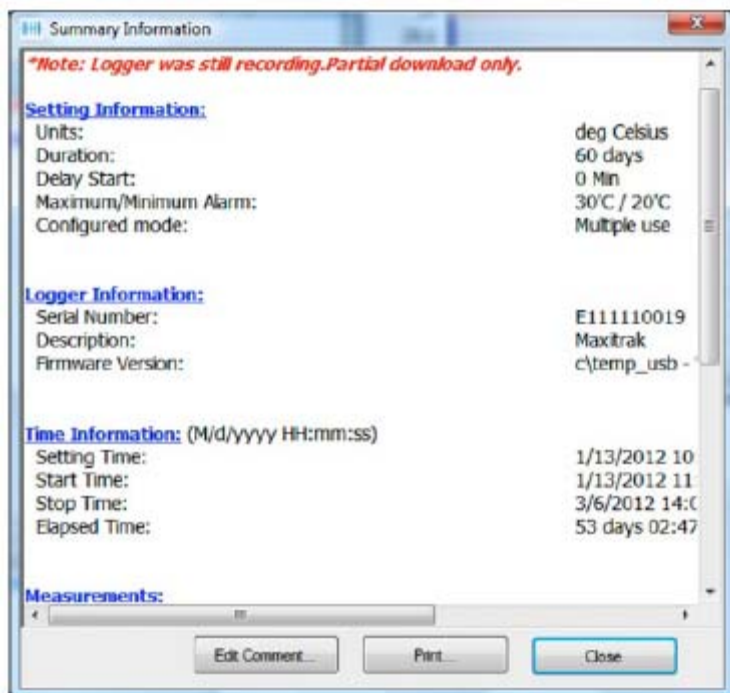
SCREENSHOT 8 – Export



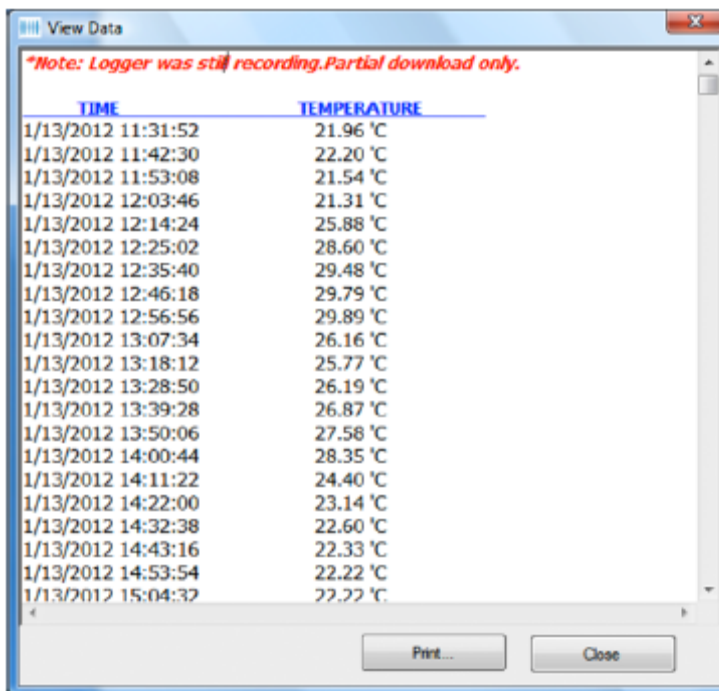
SCREENSHOT 7 – Save As



SCREENSHOT 9 – Print Preview



SCREENSHOT 10 – Summary Information



SCREENSHOT 11 – View Data



1295 Morningside Avenue, Unit 16-17  
 Toronto, ON M1B 4Z4, Canada  
 Phone: 416-261-4865 Fax: 416-261-7879  
 www.scigiene.com