

# LogMemorizer 3.0<sup>®</sup>

## Manual



1295 Morningside Avenue, Unit 16-18  
Scarborough, ON M1B 4Z4 Canada  
Phone: 416-261-4865 Fax: 416-261-7879  
[www.scigiene.com](http://www.scigiene.com)

# Table of contents

---

## Contents

|  |    |
|--|----|
| <b>Table of contents</b> .....                                     | 2  |
| <b>General</b> .....   | 4  |
| <b>What is humimeter LogMemorizer?</b> .....                       | 4  |
| <b>Features:</b> .....   | 4  |
| <b>First steps</b> .....   | 4  |
| <b>Setting up the interface</b> .....                              | 4  |
| <b>Setting up humimeter devices</b> .....                          | 5  |
| <b>Setting up FSA devices</b> .....                                | 6  |
| <b>Importing logs</b> .....  | 6  |
| <b>Importing data from humimeter devices</b> .....                 | 6  |
| <b>Main window</b> .....   | 7  |
| <b>Main window</b> .....   | 7  |
| <b>Sectors</b> .....   | 7  |
| <b>Menu items and functions</b> .....                              | 9  |
| <b>Menu</b> .....  | 9  |
| <b>Menu Start</b> .....  | 9  |
| <b>Menu Communication</b> .....                                    | 10 |
| <b>Menu Extras</b> .....   | 11 |
| <b>Context menu measuring series</b> .....                         | 12 |
| <b>Drop-down menu columns</b> .....                                | 12 |
| <b>Grouping measuring series</b> .....                             | 12 |
| <b>Grouping measuring series</b> .....                             | 12 |
| <b>Filtering the table view</b> .....                              | 12 |
| <b>Filtering the table view</b> .....                              | 12 |
| <b>Standard filter</b> .....                                       | 12 |
| <b>Advanced filter</b> .....                                       | 13 |
| <b>Analysis</b> .....  | 15 |
| <b>Analysis window</b> .....                                       | 15 |
| <b>Data backup</b> .....   | 22 |
| <b>Data backup</b> .....   | 22 |
| <b>Program directory</b> .....                                     | 22 |
| <b>Database</b> .....  | 23 |
| <b>C:\ProgramData\logmemorizer</b> . . . . .                       | 23 |
| <b>Manual saving</b> .....   | 23 |
| <b>Data recovery</b> .....   | 23 |
| <b>In case of new operating system</b> .....                       | 23 |
| <b>In case of measuring series/values deleted by mistake</b> ..... | 23 |
| <b>Customer´s and supplier´s data management</b> .....             | 24 |

|   |           |
|---|-----------|
| Customer's and supplier's data window.....                  | 24        |
| Toolbar .....   | 24        |
| Creating new customer or supplier .....                     | 24        |
| <b>Support .....</b>  | <b>24</b> |
| Support for humimeter LogMemorizer .....                    | 24        |
| Help file .....   | 24        |
| Via e-mail.....   | 24        |
| <b>humimeter LogMemorizer3 .....</b>                        | <b>24</b> |
| <b>System requirements for humimeter LogMemorizer .....</b> | <b>24</b> |
| Operating system .....                                      | 24        |
| Hardware .....  | 25        |
| Software .....  | 25        |

### What is humimeter LogMemorizer?

**humimeter LogMemorizer** is a tool for recording, analysing and managing measuring values (logs) from moisture meters of the **humimeter and FSA series**.

#### Features:

- Database driven system
- Storing and viewing logs – in tabular form and diagrams
- Perception of already saved logs while reading in
- Customer´s resp. supplier´s data management
- Direct analysis of logs in the program
- Data export
- Special MS Excel export function
- Merging of logs
- Modification of additional log data
- Diagram print without previous export
- Extensive filter functions
- Multilingual: ENG, GER, FRE, ITA, SPA
- and many other features

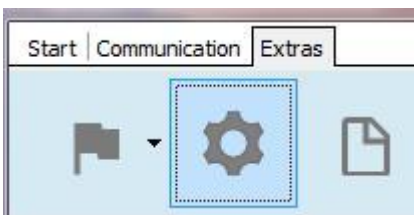
### First steps

---

#### Setting up the interface

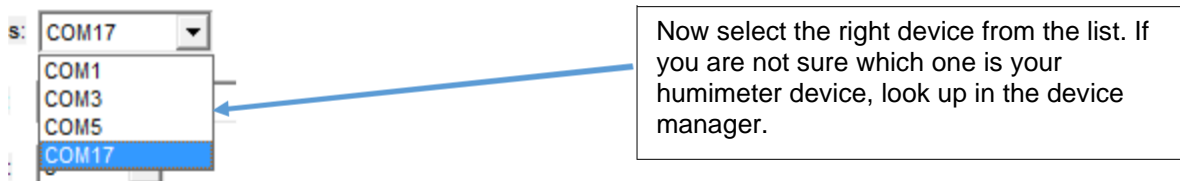
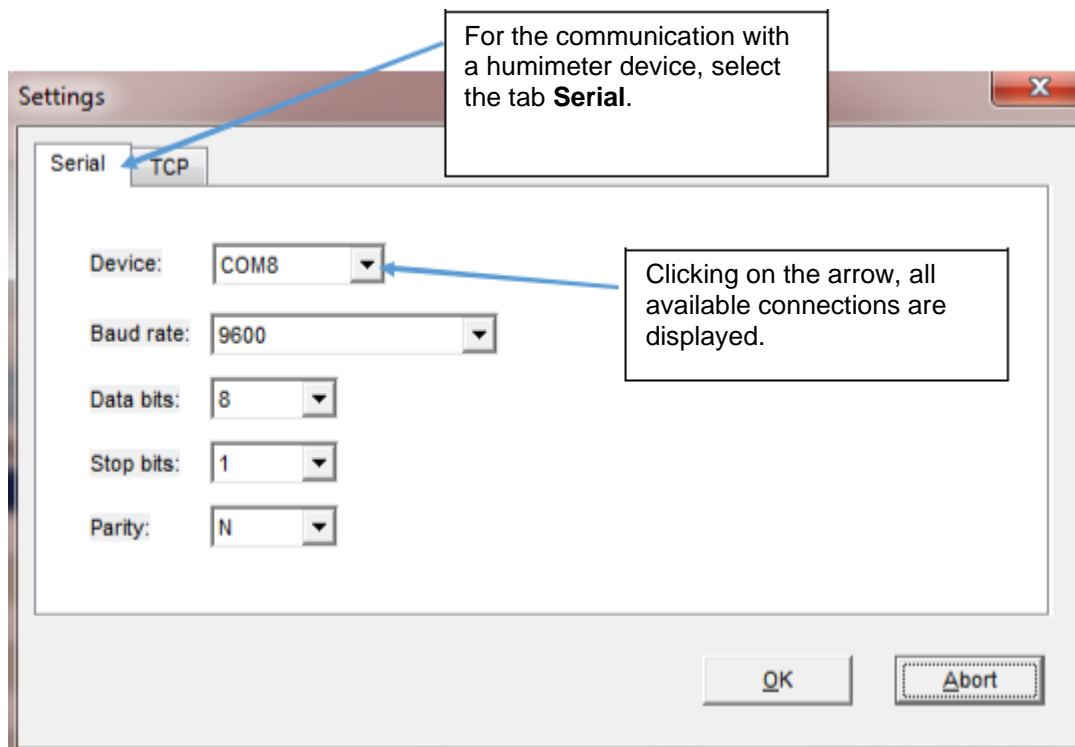
##### Access:

Extras – Settings:??



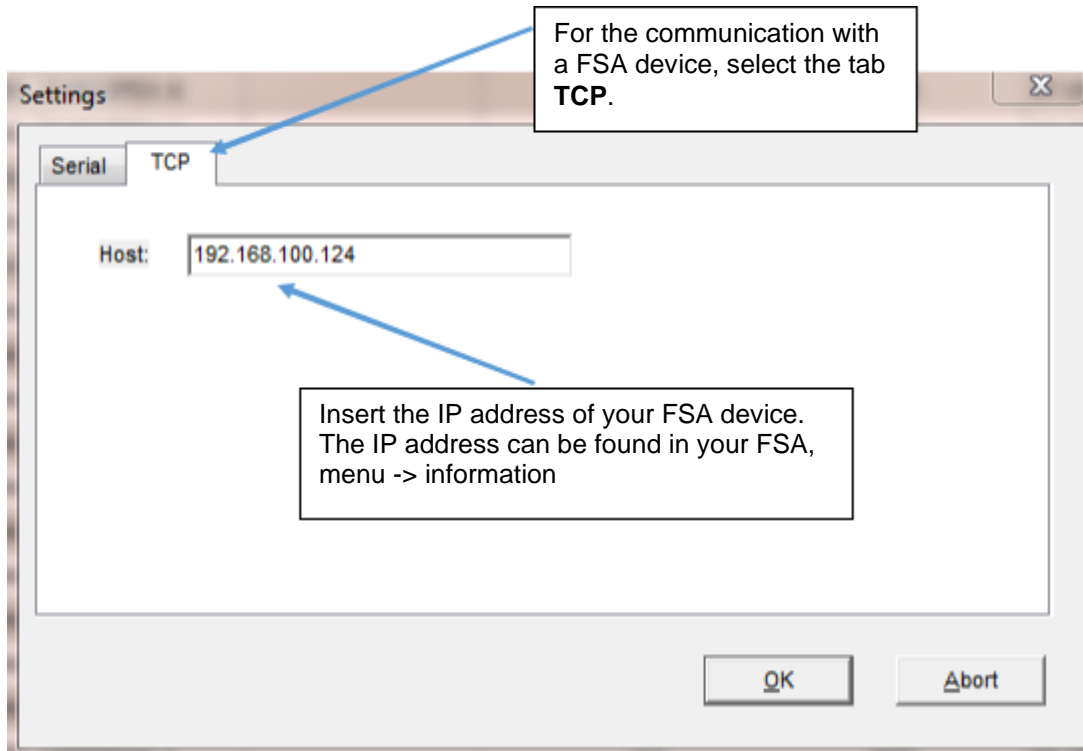
For reading in data with **humimeter LogMemorizer**, the right connection settings have to be chosen.

## Setting up humimeter devices



The preset settings for Baudrate (9600), Databits (8), Stoppbits (1) and Parity (N) must not be changed. Press OK for saving the settings.

## Setting up FSA devices



Save the settings pressing the OK button.

## Importing logs

### Importing data from humimeter devices

There are 2 different ways of importing data from the device:

#### Variant 1:

After starting the program, the set interface is opened automatically and monitored constantly. After choosing **Send logs** on the measuring instrument, the **humimeter LogMemorizer** starts importing the data.

#### Variant 2:

Selecting the menu item **Communication**, the import of data can be started directly via the **humimeter LogMemorizer** software.





Importing **all automatically** saved logs.



Importing the **last automatically** saved log.



Importing **all manually** saved logs.



Importing the **last manually** saved log.



Deleting manually saved logs from the device.



Deleting automatically saved logs from the device.

For deleting logs, an additional query has to be confirmed.

## Main window

### Main window

The screenshot shows the main window of the software. At the top, there is a menu bar with 'Start', 'Communication', and 'Extras'. Below the menu bar is a toolbar with icons for chart, print, document, edit, checkmark, undo, delete, copy, and paste. A status bar at the top displays various sensor readings: 78,0°F | 6,16% | 456kg/m³ | -27,3td | 0,64aw | 51,9%r.H. | 14,8%abs | 180,4g/m³ | 09m/s | 4,90Ug/l | 163µm | 23,2°C | 78,8°F | 6,16% | 456kg/m³ | -27,3td | 0,64aw | 51,9%r.H. | 14,8%abs | 180,4g/m³ | 09m/s |

| Serial number     | Additional Data       | Customer | Supplier | Calibration curve | Sensor | Start               | End                 | Type | Logs | Average | Minimum v | Maximum v | AVGTEMP |
|-------------------|-----------------------|----------|----------|-------------------|--------|---------------------|---------------------|------|------|---------|-----------|-----------|---------|
| Scholler FSA 0037 |                       |          | Mais     | FSA               |        | 22.09.2015 13:32:00 | 22.09.2015 13:32:00 | MAN  | 1    | 28,76   | 28,76     | 28,76     | 21,78   |
| Pos               | Time                  | Moisture | [Unit]   | Temperature       | [Unit] | hectolitre          | ?                   |      |      |         |           |           |         |
|                   | 1 22.09.2015 13:32:00 | 28,76 %  |          | 21,78 °C          |        | 69,18 kg/H          |                     |      |      |         |           |           |         |

At the bottom, there is a footer with 'www.hummeter.com', 'v 3.0.0.110', and 'a dg solution'.

### Sectors

### Task menu

### Start

The menu item Start contains all functions for measuring values saved in the database.

This is a close-up view of the 'Start' menu bar and the toolbar. The menu bar contains 'Start', 'Communication', and 'Extras'. The toolbar includes icons for chart, print, document, edit, checkmark, undo, delete, copy, and paste.

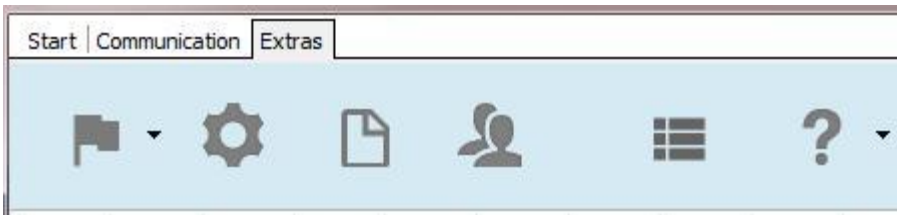
### Communication

The menu item Communication contains the functions for communication with measuring devices.



## Extras

In the menu item Extras the database for customer's and supplier's data can be found and diverse settings can be modified.



## Business sector symbol

One improvement of the LogMemorizer 3.0 is the implementation of six business sectors with different functions and a different optics, e.g. depending on the sector columns are shown or hidden automatically. The LogMemorizer recognises the corresponding business sector of the connected measuring device. Devices from other business sectors are hidden on the display. With the implementation of the business sector, the overview should be improved.

## Table view

### Measuring series

| Serial number      | Additional Data | Customer  | Supplier | Calibration curve | Sensor | Start               | End                 | Type | Logs | Average | Minimum | Maximum | AVGTEMP |
|--------------------|-----------------|-----------|----------|-------------------|--------|---------------------|---------------------|------|------|---------|---------|---------|---------|
| humimeter 5000     | 0B              |           |          | 400 Altpapier     | RP6    | 21.12.2015 05:58:36 | 21.12.2015 05:58:45 | MAN  | 4    | 16,88   | 16,50   | 17,00   | 23,00   |
| SN: humimeter 2296 | EUROPAP         | TestKunde |          | S3                | RP5    | 17.08.2015 15:31:10 | 17.08.2015 15:31:10 | MAN  | 1    | 80,00   | 80,00   | 80,00   | 26,00   |
| SN: humimeter 2296 | EUROPAP         |           |          | S3                | RP5    | 17.08.2015 15:31:10 | 17.08.2015 15:31:10 | MAN  | 1    | 80,00   | 80,00   | 80,00   | 26,00   |
| SN: humimeter 2296 | EUROPAP         |           |          | S3                | RP5    | 16.08.2015 16:29:08 | 16.08.2015 16:29:09 | MAN  | 1    | 79,50   | 79,50   | 79,50   | 26,50   |
| SN: humimeter 2296 | EUROPAP         |           |          | S3                | RP5    | 11.08.2015 17:06:40 | 11.08.2015 17:10:40 | MAN  | 20   | 17,00   | 13,00   | 22,50   | 25,50   |

The header data of the corresponding measuring series is displayed, and the shown columns can be modified.

### Measuring values

| Pos | Time                | Moisture | [Unit] | Temperature | [Unit] |
|-----|---------------------|----------|--------|-------------|--------|
| 1   | 21.12.2015 05:58:37 | 16,50    | %      | 23,00       | °      |
| 2   | 21.12.2015 05:58:41 | 17,00    | %      | 23,00       | °      |
| 3   | 21.12.2015 05:58:44 | 17,00    | %      | 23,00       | °      |
| 4   | 21.12.2015 05:58:45 | 17,00    | %      | 23,00       | °      |

Clicking on the plus at the beginning of the header data line, the single measuring values are shown in the main window.




## Menu items and functions

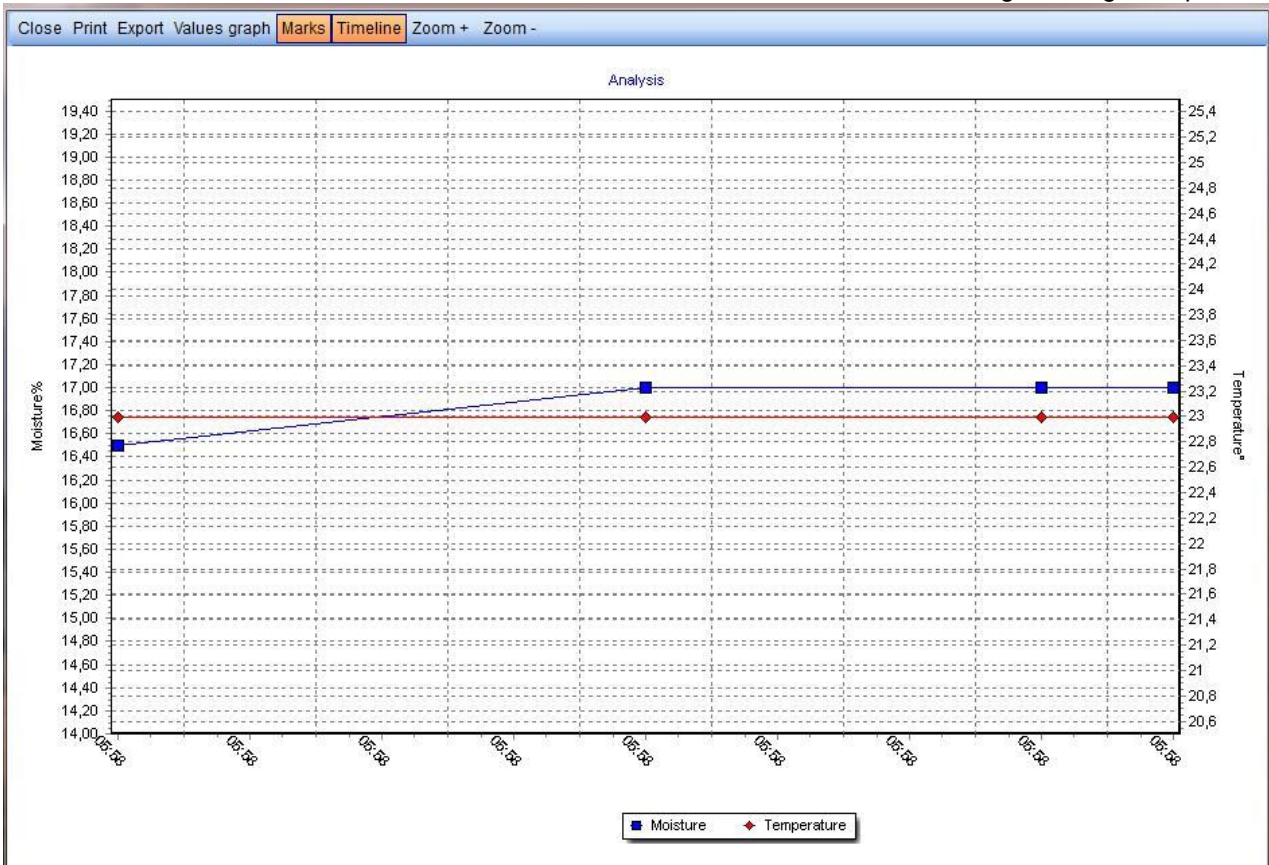
### Menu

### Menu Start



### Creating a diagram

Mark one row of the database and click on the  button. A new window containing the diagram opens.



This diagram can be exported or printed out. You can choose if the dots and measuring values are shown or hidden in the diagram. The program offers the possibility to zoom the graph in or out. You can also zoom by marking an area with the mouse.

For a detailed description see chapter **Analysis**.

### Print function

The LogMemorizer offers the function of printing delivery notes and tables.



The selected measuring series can be printed in different layouts. In a PopUp window the desired template can be selected.

## Excel Export



Exports the selected measuring series in an Excel sheet.

## Editing additional data



With this button the additional data of a measuring series can be modified and a customer or supplier can be allocated.



Clicking this button in the editing mode, the modifications are set and saved in the database.



Clicking this button in the editing mode, the modifications are cancelled and the database is not updated.



The selected measuring series is deleted. This can also be effected by pressing the Delete key resp. **right mouse button -> Delete measuring series.**

## Copy to clipboard



Copies the selected measuring series to clipboard.

## Merging measuring series



Marking two or more measuring series and clicking on this button, a new measuring series containing ALL measuring values of the selected rows is created.

## Menu Communication



Reading in **all automatically** saved measuring series.



Reading in **last automatically** saved measuring series.



Reading in **all manually** saved measuring series.



Reading in **last manually** saved measuring series.



Deleting manually saved measuring series from the device.

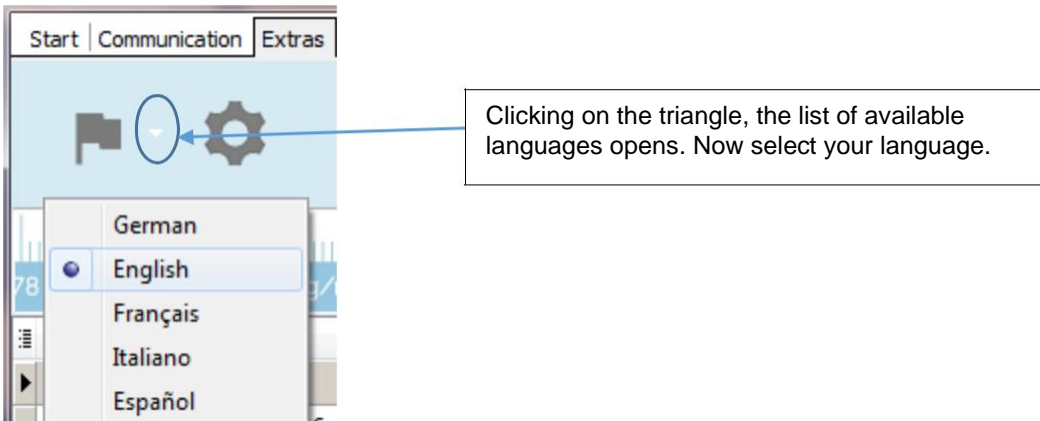


Deleting automatically saved measuring series from the device.

## Menu Extras




## Selecting language




## Setting up the interface

 Opens the interface menu. See chapter **First steps -> setting up the interface**


## Editing / creating print template

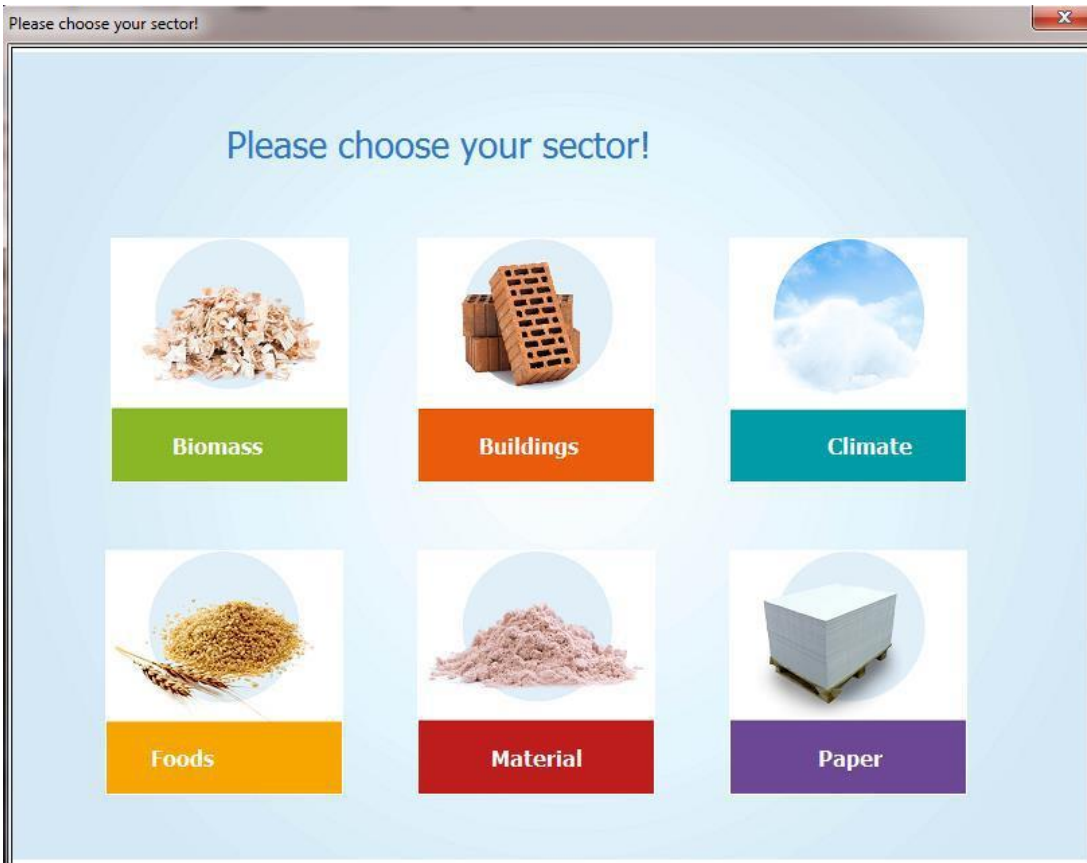
 Opens an app for editing print templates. Only for experienced users. On the USB flash drive can be found a special manual for this app. The program already offers a variety of patterns for printing delivery notes, diagrams, tables and so on.

## Customer's and supplier's data management

 One of the essential improvements of LogMemorizer3 is the new customer's and supplier's data management. You can create new customers and suppliers and connect them to the measuring series. For a detailed description see chapter **Customer's and supplier's data management**.

## Changing business sector

 Are you using several humimeter devices in different application fields? The LogMemorizer3 software recognises the last read in device and activates the corresponding business sector automatically. All devices from other sectors are hidden (but still existing in the database). If you want to show devices from other business sectors, click on the symbol and select the corresponding business sector.



## Context menu measuring series

Right mouse click on measuring series.

## Drop-down menu columns

## Grouping measuring series

---

## Grouping measuring series

## Filtering the table view

---

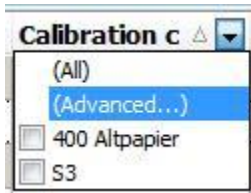
## Filtering the table view

## Standard filter

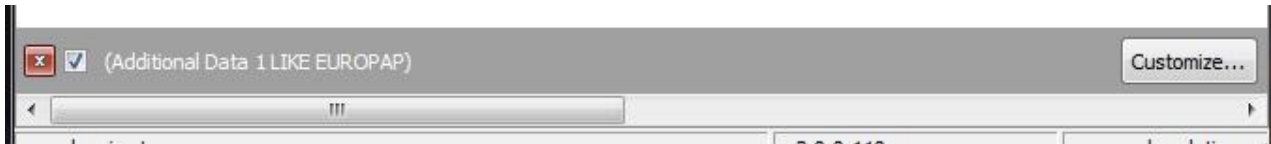
## Column headers

When you move the mouse pointer across a column header, a drop-down arrow appears on the right edge. Click on the arrow for opening the list of filter possibilities.

Now you can select one or more filter criteria. The main window shows all measuring series corresponding to the selected criteria. All other measuring series are hidden.

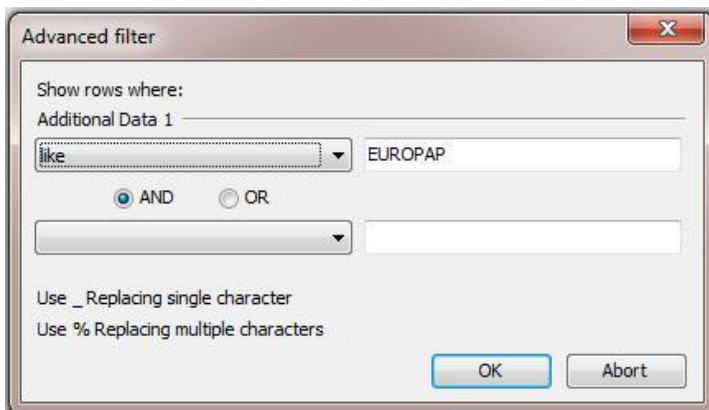


A multiple filter for different column headers is also possible.



## Advanced filter

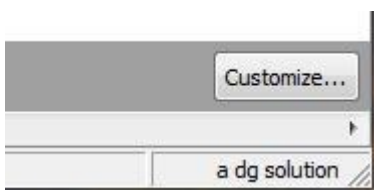
If you click on **(Advanced...)** in the list of filter possibilities, a window for further filter options opens.

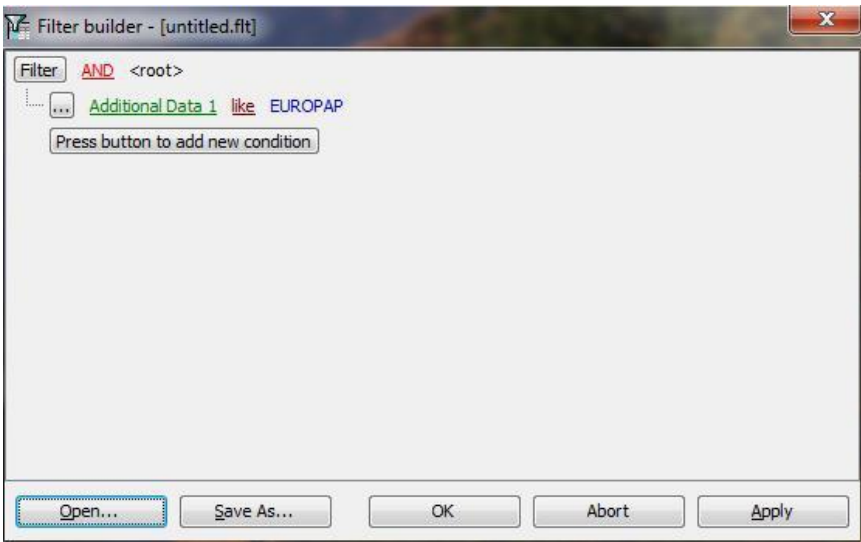


Here you can define 2 individual filter options on your own.

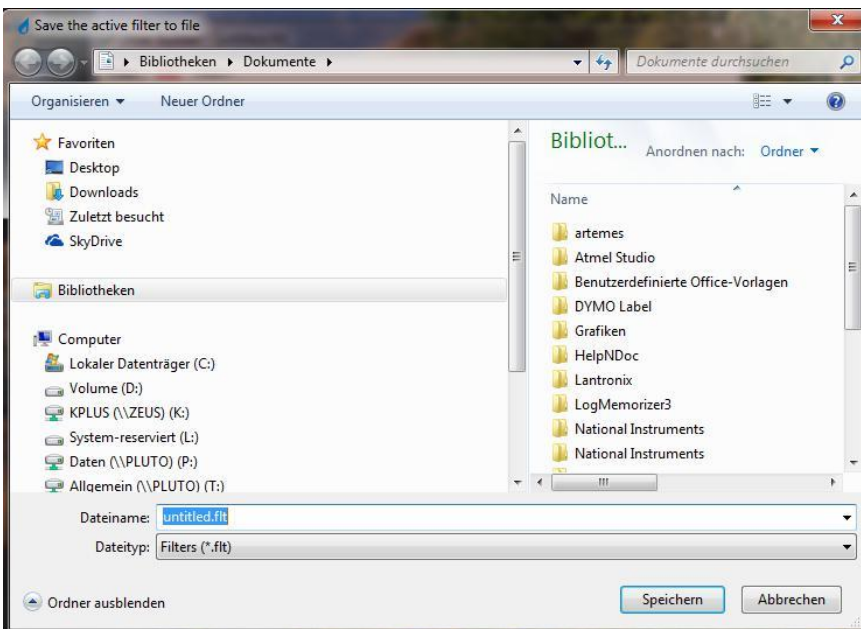
## More than 2 filter conditions


Clicking on **Customize...** in the bottom right edge of the main window, you can define further filter conditions, that can also be nested within one another.





Your individual filter conditions can be saved in this window with a name – e.g. MeasuringseriesDewpointOct07.ftt – and can be opened for using the same filter again.

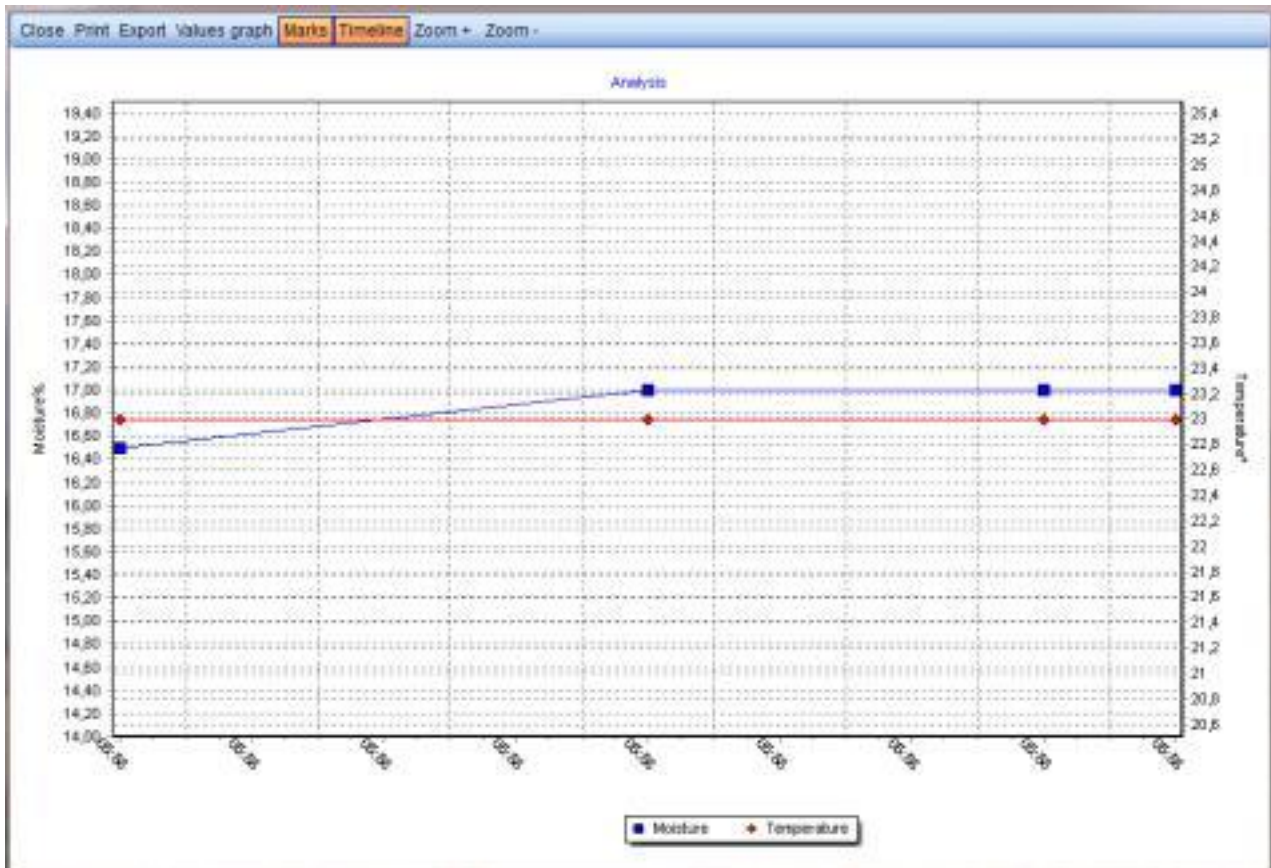


Clicking on  in the bottom left edge of the main window, the advanced filter is closed and all measuring series are displayed again.



# Analysis

## Analysis window



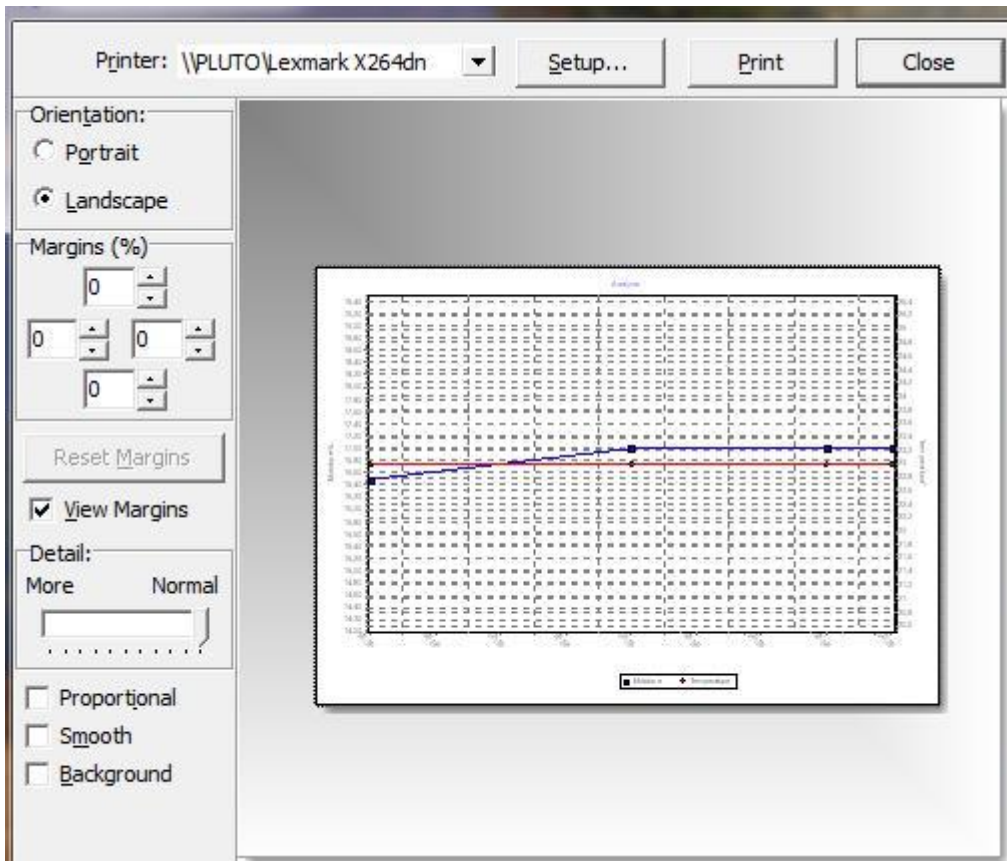
### Close

Closes the analysis window

### Print

Opens the print dialogue





## Printer

Shows you standard printer. You can also choose another printer.

## Properties

Shows the print properties of the selected printer

## Print

Starts printing

## Close

Closes the print dialogue

## Orientation

Determines the print orientation of the diagram on the printout

## Margins (%)

Here the margins in % of the page size can be set.

## Reset

Clicking on reset, the margin is reset to 0%.



## View margins

Shows or hides the defined margins in the print preview.

## Detail

Via the slide control you can regulate the details shown on the printout. Depending on the level of details, also the size of the diagram is adapted.

## Proportional

The margin is set proportionally.

## Soft

The auxiliary lines of the diagram are printed as dashed lines.

## Print preview

Here you can modify the print margins and the position of the diagram on the printout using the mouse.

## Export

The diagram can be exported into various file formats.

The following formats are supported:

|                                |                                  |
|--------------------------------|----------------------------------|
| <b>Bitmap</b>                  | <b>*.bmp</b>                     |
| <b>Metafile /<br/>enhanced</b> | <b>*.wmf / *.emf</b>             |
| <b>PDF</b>                     | <b>*.pdf</b>                     |
| <b>TeeDatei</b>                | <b>*.tee / *.txt /<br/>*.xml</b> |
| <b>Text</b>                    | <b>*.txt</b>                     |
| <b>XML</b>                     | <b>*.xml</b>                     |
| <b>HTML</b>                    | <b>*.htm</b>                     |
| <b>Microsoft<br/>Excel</b>     | <b>*.xls</b>                     |

Pressing the button **Copy** the selected data is copied to clipboard.

Pressing the button **Save** the selected data is saved in a file.

### **ATTENTION:**

**In the saving menu the same file extension than the format selected before has to be selected. Otherwise the created file contains wrong file information!**

The button **Send** opens an e-mail, containing a file with the selected data in the selected format.

Pressing the button **Close** the dialogue is closed.

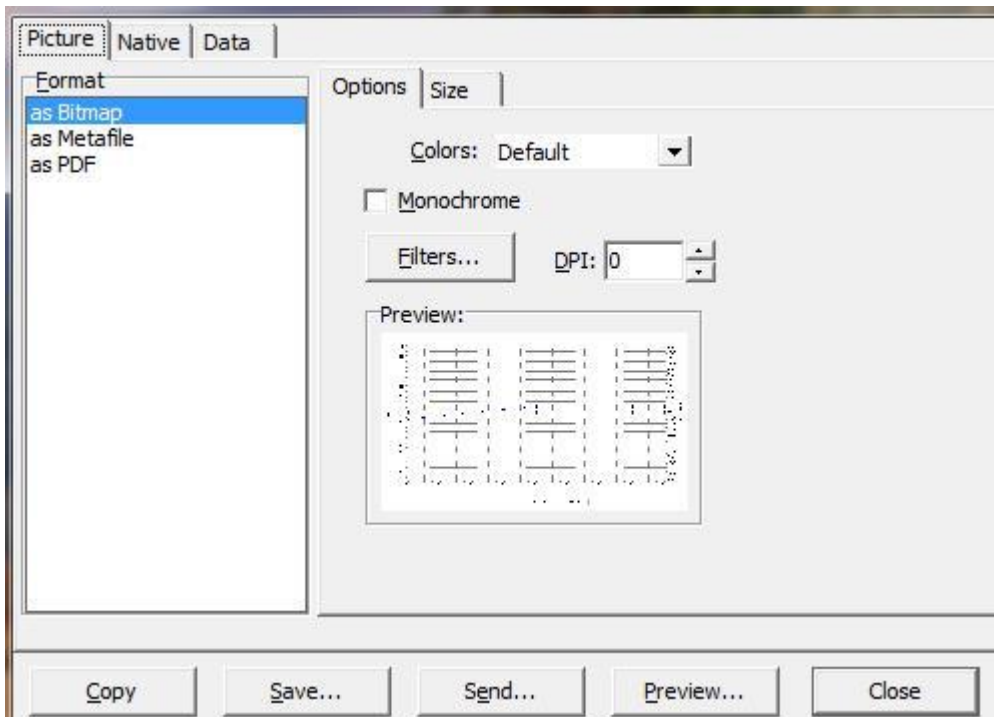
### **TIP:**

The smallest file size is achieved by selecting "as PDF".

## Picture

The diagram can be exported into different picture file formats with different options.

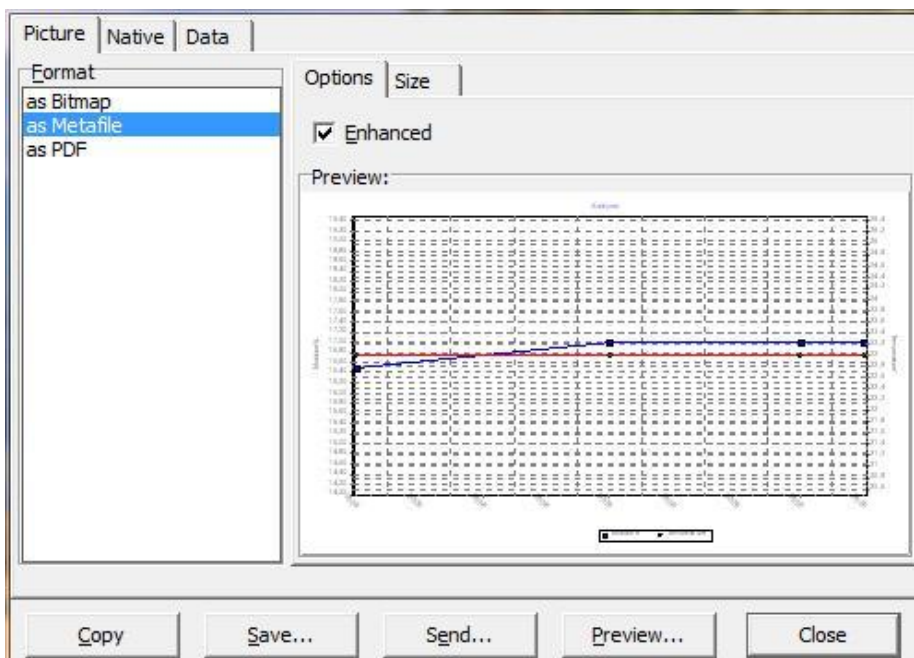
## as Bitmap:



The colour depth (number of colours) can be selected under "**colours**".  
Selecting the option "**monochrome**" a black-and-white bitmap is created.  
Clicking on **Filter** a variety of graphic filters can be applied to the bitmap.

The size of the picture can be modified by clicking on "size". The size is indicated in Pixel.

## as Metafile:



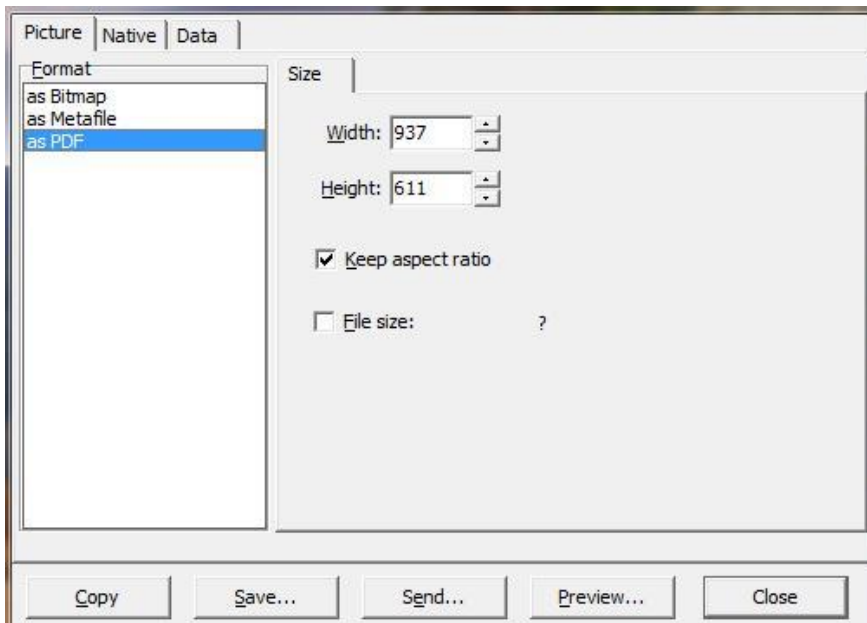
If **Enhanced** is deactivated, a Windows Metafile is generated.

With activated **Enhanced**, an Enhanced Windows Metafile is generated.

With the same settings, the Enhanced Windows Metafile is a file with a higher number of pixels, but smaller file size.

The size of the picture can be modified by clicking on "size". The size is indicated in Pixel.

## as PDF:

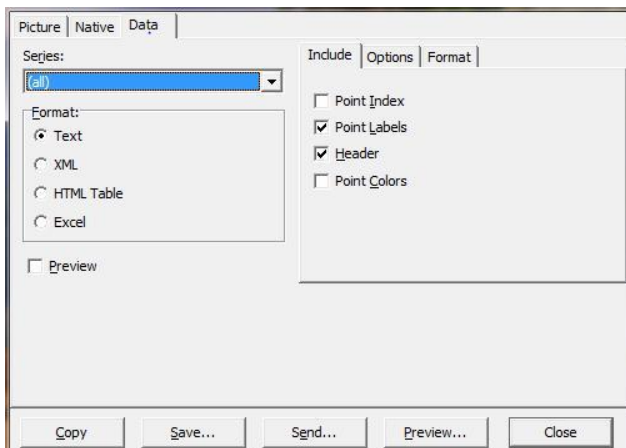


For exporting the PDF only the size in Pixel can be chosen.

## TeeDatei

For a special diagram software (TeeChart), the export of a Tee file is needed.

## Data



## Row

Here you can select if you want to export both measuring rows (all) or only the moisture and temperature values.

## Include:

**"Point index":** Text, XML, HTML, Excel

The data is preceded by an index beginning with 0.

**"Point labels":** without function

**"Header":** Text, HTML, Excel

The data is provided with a labelling header.

"Point colors": without function

## Format

### Text format

A text file with selected delimiter is generated. Also a character defined by the user can be selected as delimiter.

### XML format

A XML file for data transfer with different systems (e.g. databases) is generated.

### HTML table

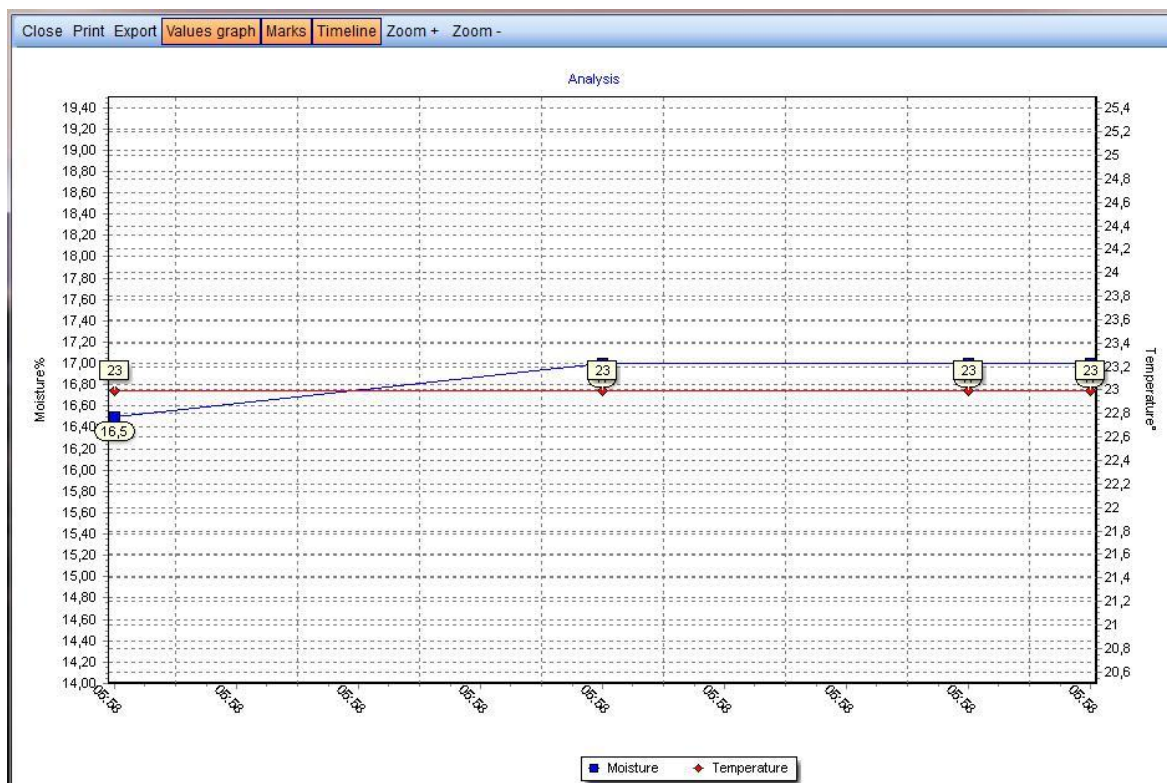
A HTML table without formatting (except border="1") and without header information is generated.

### Excel

A Microsoft Excel table is generated.

## Showing values

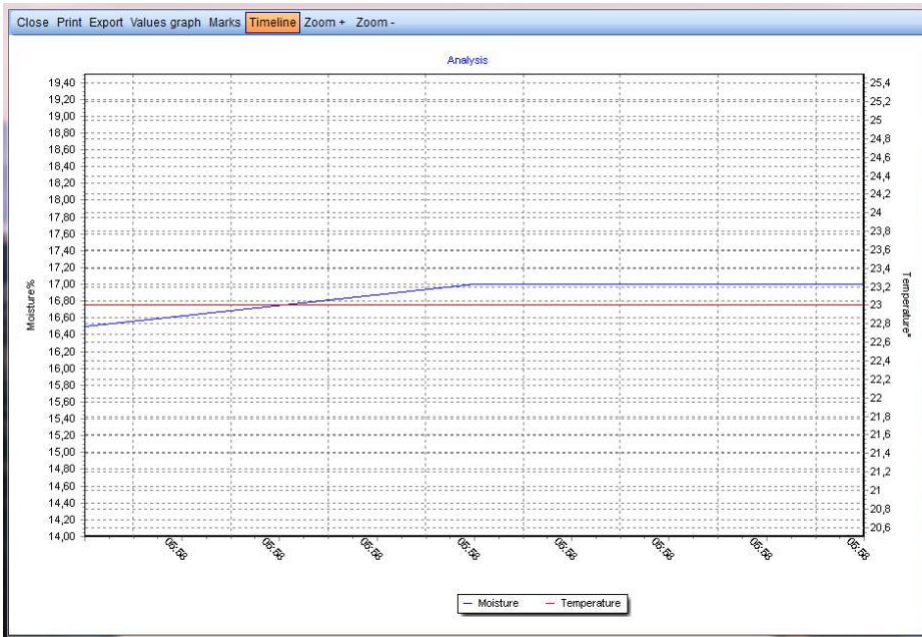
Clicking on **values graph**, the value of each measuring point is shown in the diagram.



## Marks

By default this button is activated.

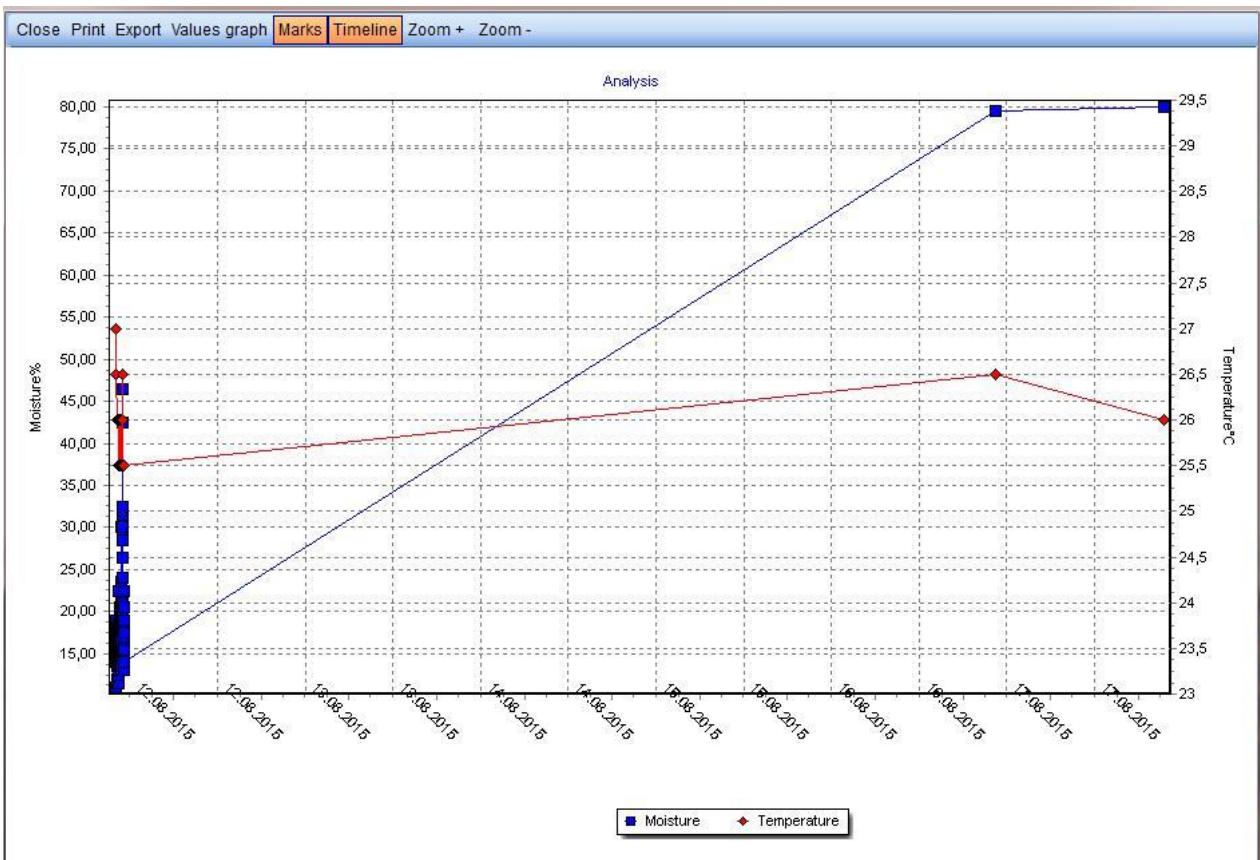
For hiding the marking points, click on **Marks**.



## Timeline

By default this button is activated.

This function is needed in case of a merged measuring series, containing single measuring values with different measuring time.



If for example two measuring values differ in date, the first measuring value is shown on the very left, while the second measuring value is displayed on the very right.

To improve the clarity of the diagram, by clicking on **Timeline** you can modify the diagram, using the X axis for showing the sequence of the measuring values.



## Zoom + / Zoom -

### Zoom +

Enlargens the diagram, with focus on the centre of the diagram.

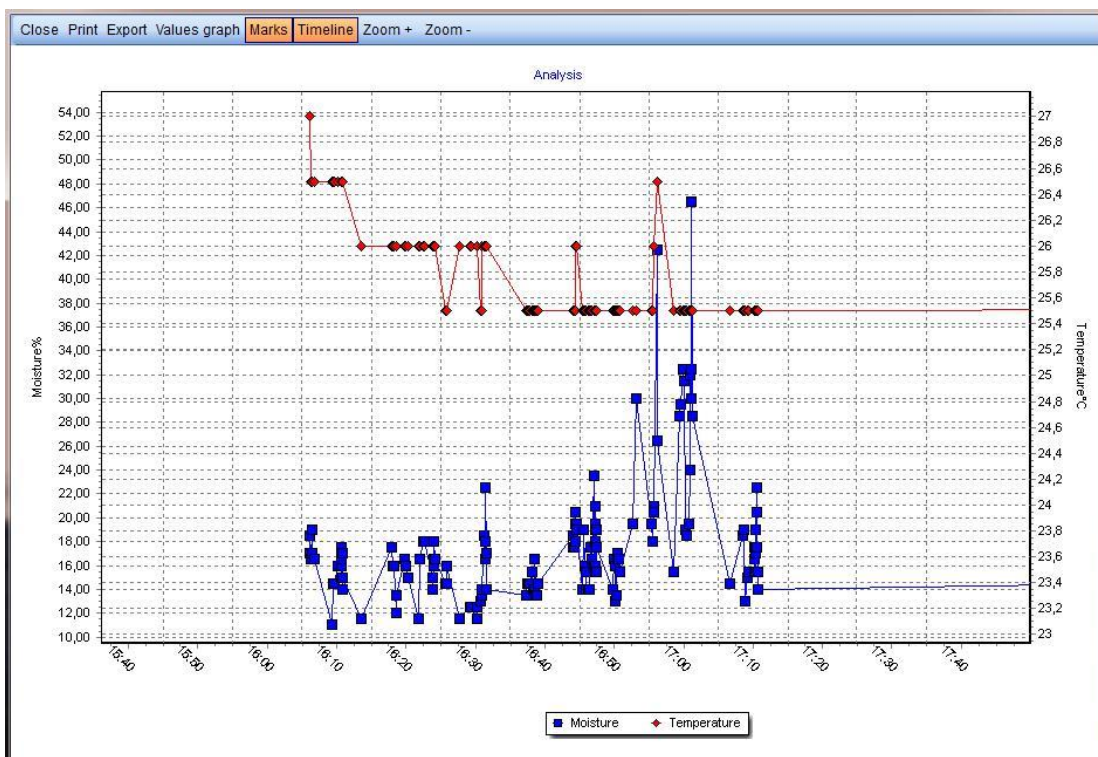
### Zoom -

Reduces the diagram, with focus on the centre of the diagram.

## Zooming with the mouse

To enlargen, drag the window to the right with the mouse.

For the total view, drag a window to the left with the mouse.



## Close

Closes the analysis window

## Data backup

## Data backup

## Program directory

The program directory doesn't have to be saved, as it doesn't contain any data that can be modified.

After a new installation – e.g. after reinstalling the operating system – all required data is installed automatically.

## Database

The database has to be stored regularly.

The database file DATA.gdb in the diverse operating systems is located in the following directory:

### Directory:

C:\ProgramData\Logmemorizer

## Manual saving

Copy the file DATA.gdb from the above mentioned directory to a secure storage, for example another hard disk, CD or USB flash drive.

## Data recovery

### In case of new operating system

After a reinstallation of the operating system, for being fully functional again, the following steps are necessary:

1. Install the LogMemorizer software from the LogMemorizer USB flash drive.
2. Copy your saved database file DATA.gdb in the above mentioned directory.
  - After installing LogMemorizer the existing file DATA.gdb is empty and has to be overwritten by your backup file.

### In case of measuring series/values deleted by mistake

1. Rename the database file in the above mentioned directory.
2. Copy your backup file - DATA.gdb – in the above mentioned directory.





# Customer's and supplier's data management

## Customer's and supplier's data window



| Number | Name        | Type   | VAT         | Postal code | Place                  | Coun  | Address1         | Address2 |
|--------|-------------|--|-------------|-------------|------------------------|-------|------------------|----------|
| 1234   | ABCDE       | <input checked="" type="radio"/> Customer <input type="radio"/> Supplier | AT 12344423 | 8000        | Graz                   | aut   | straße           |          |
| 11425  | TestKunde   | <input checked="" type="radio"/> Customer <input type="radio"/> Supplier | AT332244556 | 8010        | Graz                   | Oster | Musterstraße 666 |          |
| 99999  | Muster GmbH | <input type="radio"/> Customer <input checked="" type="radio"/> Supplier | AT123       | 8181        | St. Ruprecht a.d. Raab | Oster | Max Straße 99    |          |

## Toolbar

-  The first table entry is selected, resp. the cursor jumps to the beginning of the table.
-  The previous entry is selected, resp. the cursor jumps one row up.
-  The next entry is selected, resp. the cursor jumps down one row.
-  The last entry is selected, resp. the cursor jumps to the end of the table.

## Creating new customer or supplier

For creating a new customer or supplier, click on . At the current position of the cursor a new empty entry is created. Now you can insert the following data: **customer number, name, type (customer or supplier), VAT number, city, country, address1, address2, contact name, phone, email, notes.**

## Support

### Support for **humimeter LogMemorizer3**

You can contact us via e-mail at [support@sciigiene.com](mailto:support@sciigiene.com) or by calling 416-261-4865.

### System requirements for **humimeter LogMemorizer3**

The following requirements are minimum requirements:

#### Operating system

From Windows 7

#### Hardware

For the installation approx. 20MB free disc space is required.

#### Software

If you want to use the MS Excel export function, Microsoft Excel has to be installed on your PC.