



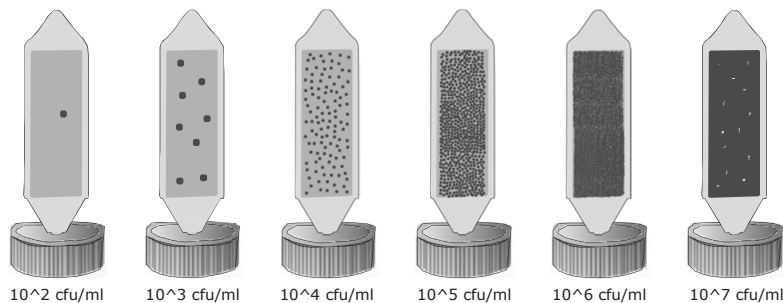
MICROBIOLOGY

HygieneChek™

Interpretation Guide – Quantification

Dipping into liquids

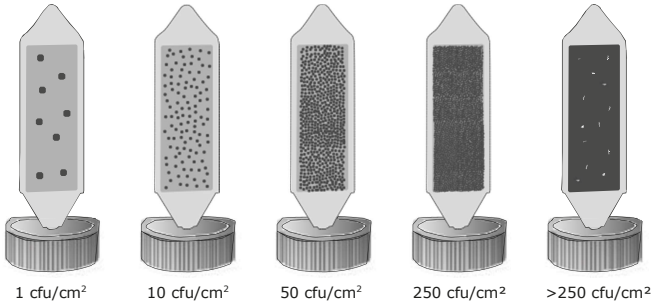
The limit of detection is 10^2 cfu/ml. This means that at least 100 microorganisms have to be present in 1 ml of liquid sample before any colonies appear on the paddle. Compare your paddle with the pictures below for estimated values. For selective agar HygieneChek™ products, consider only the colonies as specified in the package insert and in the qualification part.



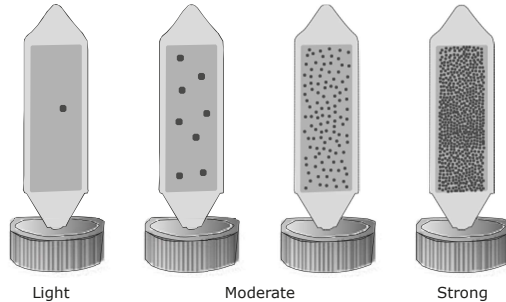
Surface contact

For the evaluation of surface contact tests, count the colonies and divide the results by 9 to get the cfu/cm², as the area of one paddle side is 9 cm². Or just compare it with the pictures below. For selective agar HygieneChek™ products, count the colonies as specified in the package insert and in the qualification part.

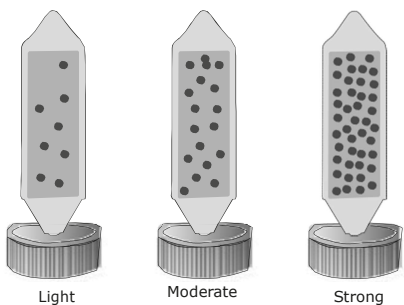
Surface contact



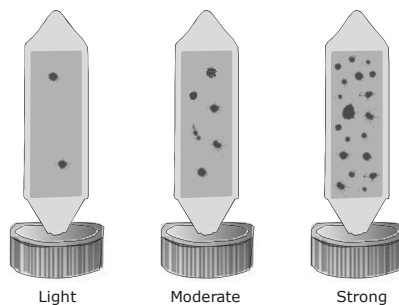
Surface contact (contamination grade)



Surface contact yeast (contamination grade)



Surface contact mold (contamination grade)

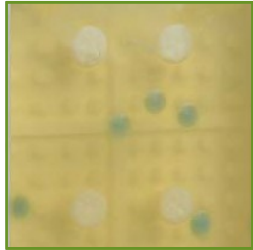


1295 Morningside Avenue, Unit 16-18
Scarborough, ON M1B 4Z4 Canada
Phone: 416-261-4865 Fax: 416-261-7879
www.scigiene.com

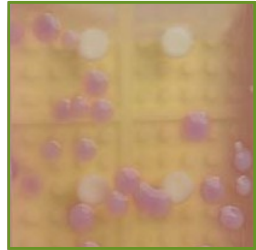
HygieneChek™

Interpretation Guide – Qualification

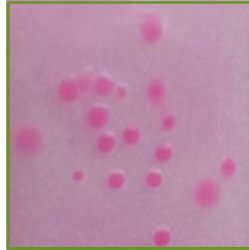
Please also use the explanations in the package insert for colony determination!



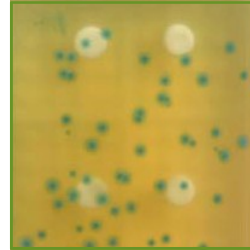
CHROMagar Staphylococcus aureus with *Staphylococcus saprophyticus*



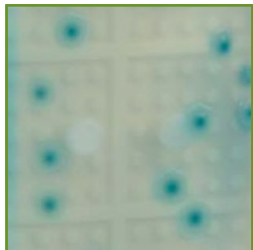
CHROMagar Staphylococcus aureus with *Staphylococcus aureus*



CHROMagar Salmonella with *Salmonella typhimurium*



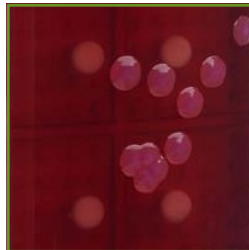
ALOA Listeria agar with *Listeria*



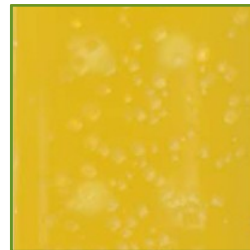
CHROMagar E. coli with *E. coli*



Coliform agar or Enterobacteriaceae agar with *E. coli*



Coliform agar with *Enterobacter aerogenes*



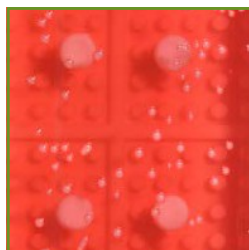
Disinfection Control agar with *E. coli*



Disinfection control agar with *Pseudomonas aeruginosa*



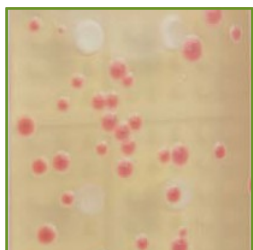
Lactic acid bacteria agar with *Lactobacillus plantarum*



Staphylococcus agar with *Staphylococcus epidermidis*



Staphylococcus agar with *Staphylococcus aureus*



TTC Total count agar with *Staphylococcus aureus*



Total count agar with *Staphylococcus aureus*



Yeast & Mold agar with *Saccharomyces cerevisiae*



Yeast & Mold agar with *Aspergillus niger*

